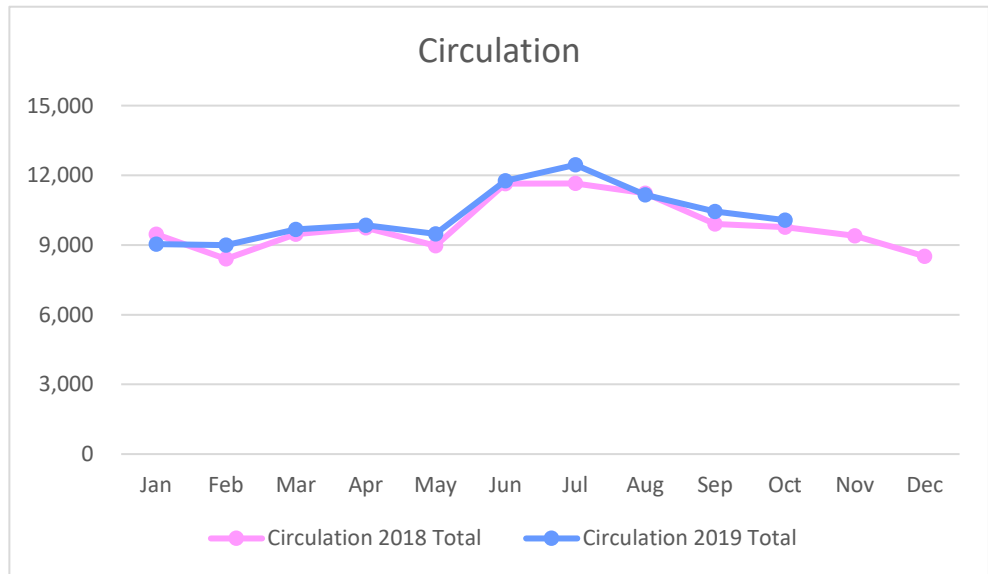


Elm Grove Public Library

Activity Report

Circulation

	2018			2019			Y-T-Y Change	
	Shelved	Overdrive	Total	Shelved	Overdrive	Total	Total Circulation	
Jan	8,840	621	9,461	8,346	691	9,037	(424)	-4.48%
Feb	7,824	578	8,402	8,261	734	8,995	593	7.06%
Mar	8,810	662	9,472	8,958	719	9,677	205	2.16%
Apr	9,080	661	9,741	9,128	722	9,850	109	1.12%
May	8,396	578	8,974	8,735	751	9,486	512	5.71%
Jun	10,987	655	11,642	10,921	849	11,770	128	1.10%
Jul	10,960	689	11,649	11,626	824	12,450	801	6.88%
Aug	10,491	737	11,228	10,336	820	11,156	(72)	-0.64%
Sep	9,185	717	9,902	9,637	802	10,439	537	5.42%
Oct	8,999	771	9,770	9,240	829	10,069	299	3.06%
Nov	8,768	628	9,396					
Dec	7,805	709	8,514					
Y-T-D	110,145	8,006	118,151	95,188	7,741	102,929	2,688	-12.88%

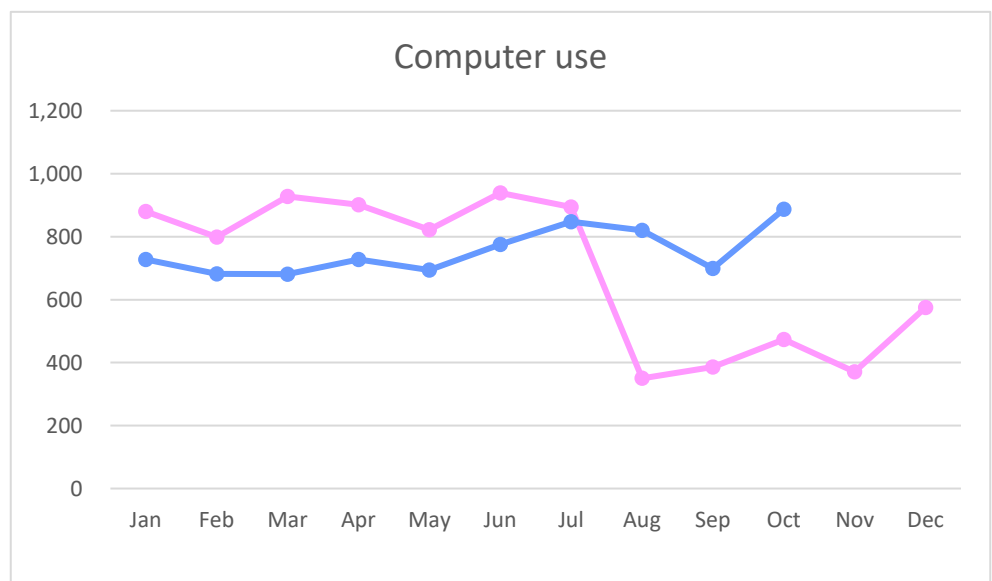


Elm Grove Public Library

Activity Report

Computer Use

	2018			2019			Y-T-Y Change	
	Library	Wi-Fi	Total	Library	Wi-Fi	Total	Total Usage	
Jan	444	436	880	401	327	728	(152)	-17.27%
Feb	411	388	799	375	307	682	(117)	-14.64%
Mar	476	452	928	380	301	681	(247)	-26.62%
Apr	465	436	901	401	327	728	(173)	-19.20%
May	366	456	822	383	311	694	(128)	-15.57%
Jun	475	464	939	360	415	775	(164)	-17.47%
Jul	425	469	894	404	444	848	(46)	-5.15%
Aug	339	11	350	433	387	820	470	134.29%
Sep	386	0	386	376	323	699	313	81.09%
Oct	473	0	473	459	428	887	414	87.53%
Nov	371	0	371					
Dec	392	183	575					
Y-T-D	5,023	3,295	8,318	3,972	3,570	7,542	170	-9.33%

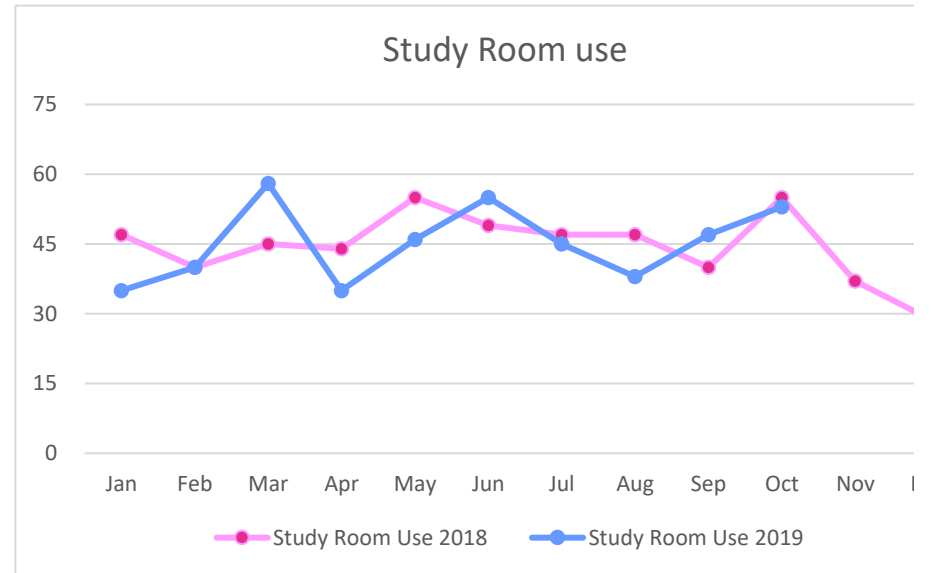


Elm Grove Public Library

Activity Report

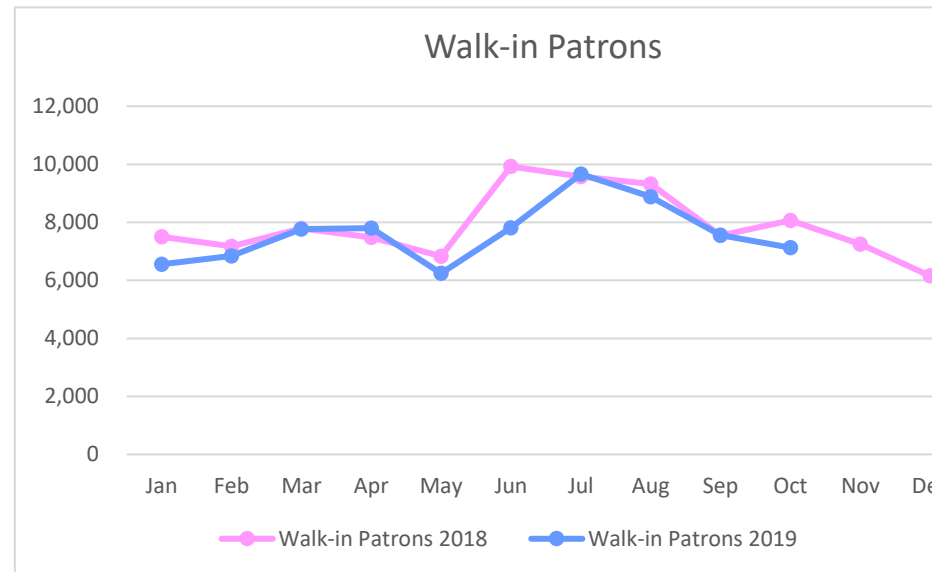
Study Room Use

	2018	2019	Y-T-Y Change	
Jan	47	35	(12)	-25.53%
Feb	40	40	0	0.00%
Mar	45	58	13	28.89%
Apr	44	35	(9)	-20.45%
May	55	46	(9)	-16.36%
Jun	49	55	6	12.24%
Jul	47	45	(2)	-4.26%
Aug	47	38	(9)	-19.15%
Sep	40	47	7	17.50%
Oct	55	53	(2)	-3.64%
Nov	37			
Dec	29			
Y-T-D	535	452	(83)	-15.51%



Walk-in Patrons

	2018	2019	Y-T-Y Change	
Jan	7,505	6,549	(956)	-12.74%
Feb	7,174	6,845	(329)	-4.59%
Mar	7,790	7,763	(27)	-0.35%
Apr	7,476	7,797	321	4.29%
May	6,828	6,241	(587)	-8.60%
Jun	9,924	7,813	(2,111)	-21.27%
Jul	9,581	9,663	82	0.86%
Aug	9,319	8,879	(440)	-4.72%
Sep	7,550	7,555	5	0.07%
Oct	8,070	7,124	(946)	-11.72%
Nov	7,245			
Dec	6,153			
Y-T-D	94,615	76,229	(18,386)	-19.43%

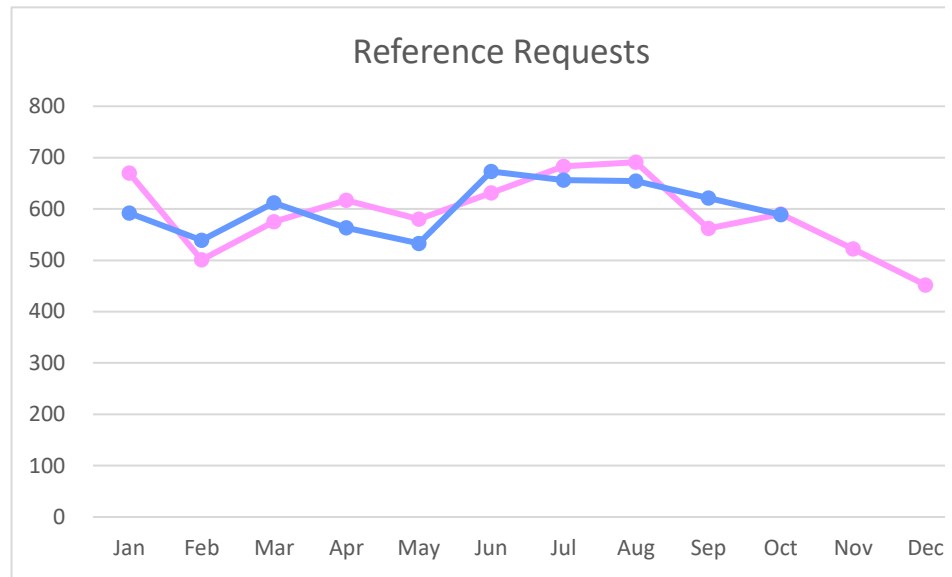


Elm Grove Public Library

Activity Report

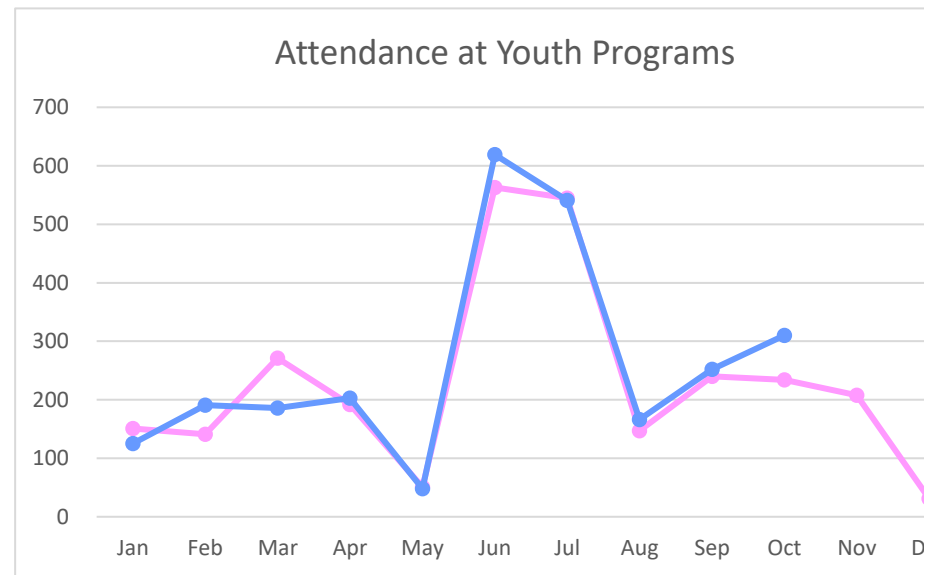
Reference Requests

	2018	2019	Y-T-Y Change	
Jan	670	592	(78)	-11.64%
Feb	501	539	38	7.58%
Mar	575	612	37	6.43%
Apr	617	563	(54)	-8.75%
May	580	533	(47)	-8.10%
Jun	631	673	42	6.66%
Jul	683	656	(27)	-3.95%
Aug	691	654	(37)	-5.35%
Sep	562	621	59	10.50%
Oct	590	589	(1)	-0.17%
Nov	522			
Dec	452			
Y-T-D	7,074	6,032	(1,042)	-14.73%



Attendance at Children's Programs

	2018	2019	Y-T-Y Change	
Jan	151	125	(26)	-17.22%
Feb	141	191	50	35.46%
Mar	271	186	(85)	-31.37%
Apr	192	203	11	5.73%
May	51	48	(3)	-5.88%
Jun	563	619	56	9.95%
Jul	545	541	(4)	-0.73%
Aug	147	166	19	12.93%
Sep	240	252	12	5.00%
Oct	234	310	76	32.48%
Nov	208			
Dec	31			
Y-T-D	2,774	2,641	(133)	-4.79%

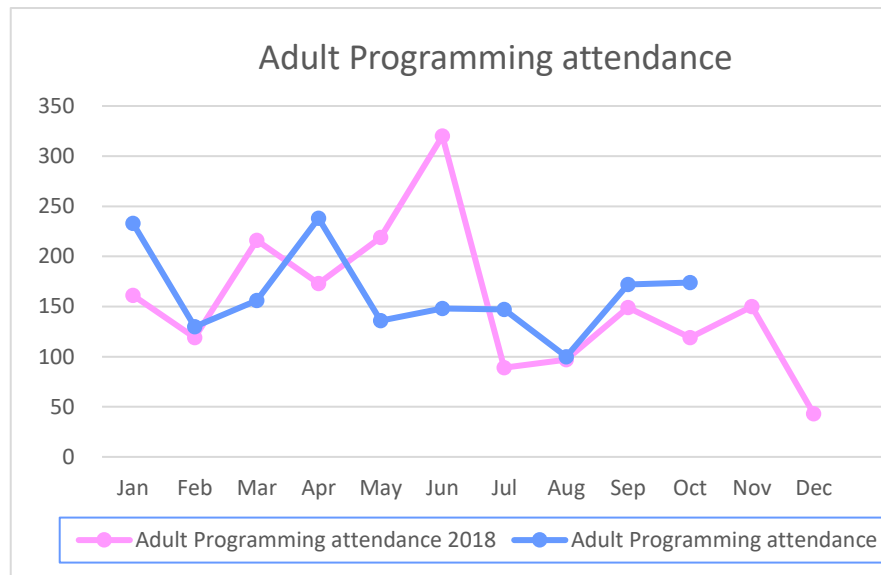


Elm Grove Public Library

Activity Report

Adult Programming attendance

	2018	2019	Y-T-Y Change	
Jan	161	233	72	44.72%
Feb	119	130	11	9.24%
Mar	216	156	(60)	-27.78%
Apr	173	238	65	37.57%
May	219	136	(83)	-37.90%
Jun	320	148	(172)	-53.75%
Jul	89	147	58	65.17%
Aug	97	100	3	3.09%
Sep	149	172	23	15.44%
Oct	119	174	55	46.22%
Nov	150			
Dec	43			
Y-T-D	1,855	1,634	(221)	-11.91%

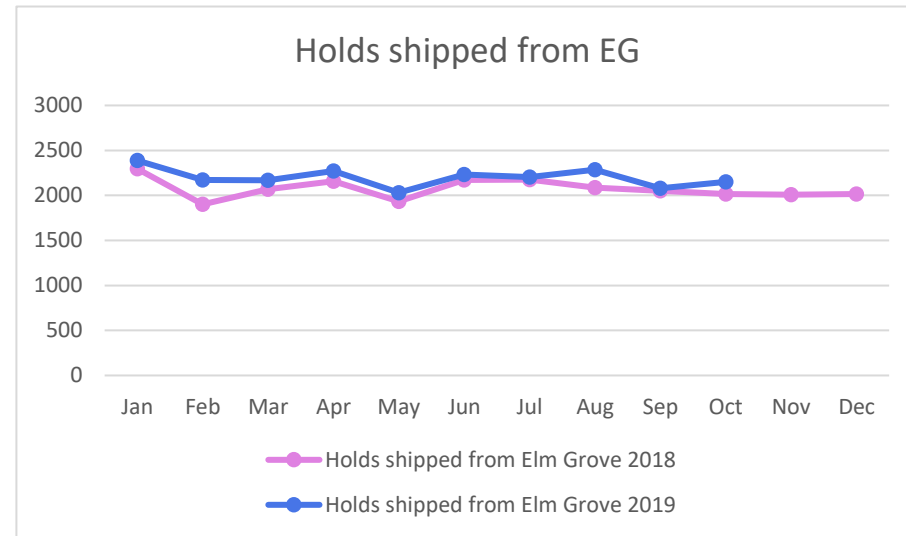


Elm Grove Public Library

Activity Report

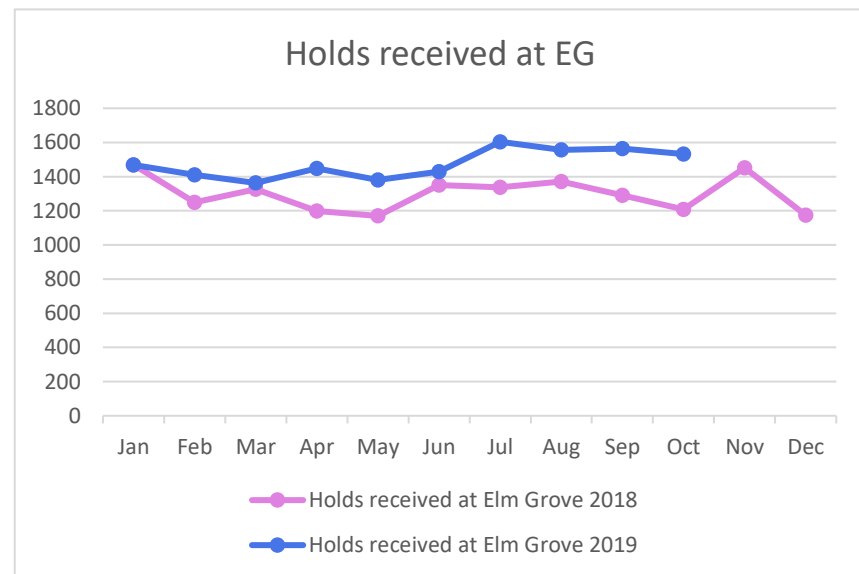
Holds shipped from Elm Grove

	2018	2019	Y-T-Y Change	
Jan	2296	2388	92	4.01%
Feb	1901	2171	270	14.20%
Mar	2070	2167	97	4.69%
Apr	2157	2271	114	5.29%
May	1935	2031	96	4.96%
Jun	2173	2231	58	2.67%
Jul	2175	2205	30	1.38%
Aug	2086	2287	201	9.64%
Sep	2052	2080	28	1.36%
Oct	2017	2151	134	6.64%
Nov	2007			
Dec	2014			
Y-T-D	24,883	21,982	(2,901)	-12%



Holds received at Elm Grove

	2018	2019	Y-T-Y Change	
Jan	1469	1469	0	0%
Feb	1249	1411	162	13%
Mar	1327	1363	36	3%
Apr	1198	1448	250	21%
May	1170	1381	211	18%
Jun	1351	1429	78	6%
Jul	1338	1604	266	20%
Aug	1371	1557	186	14%
Sep	1291	1564	273	21%
Oct	1209	1533	324	27%
Nov	1451			
Dec	1175			



Y-T-D	15599	14759	-840	-5%
--------------	--------------	--------------	-------------	------------